

# Impact

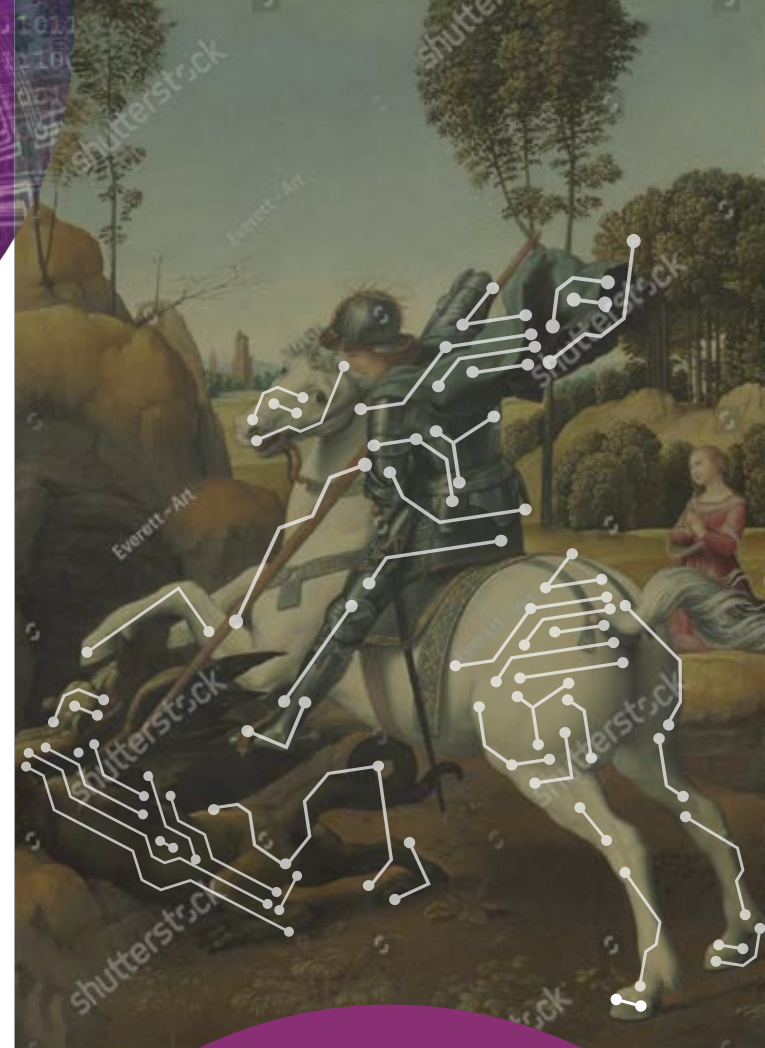
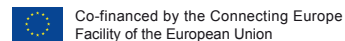
- Target arts, educational, and social institutions to create a direct impact.
- Provide metadata to EU (open) data portals.



## PARTNERS



[www.santgeorgeonabike.eu](http://www.santgeorgeonabike.eu)



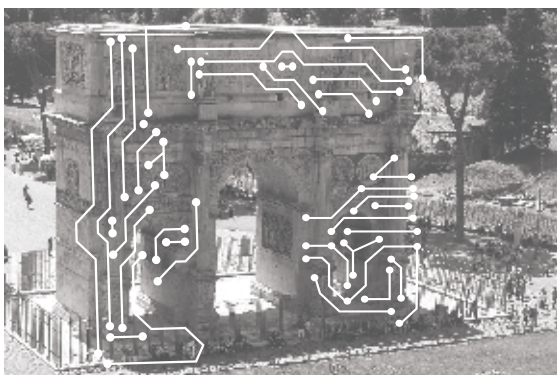
Make culture and history  
more accessible to people

[www.santgeorgeonabike.eu](http://www.santgeorgeonabike.eu)

# Saint George on a Bike

Has been chosen as one of the seven projects of the Telecom

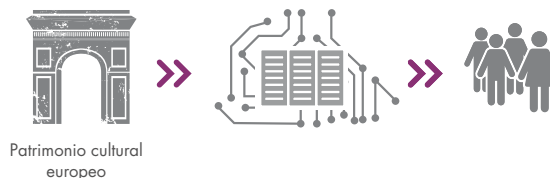
Has been chosen as one of the seven projects of the Telecom category that will get CEF (Connecting Europe Facility) funding, a European tool to facilitate international interaction between administrations, companies and citizens through the development of digital service infrastructures. **The goal of "Saint George on a bike" is to endow Artificial Intelligence of knowledge regarding European cultural patrimony.**



Coordinated by the BSC, this project's goal is to generate descriptions of pieces from the European cultural heritage. In order to carry it out, the center will jointly work with Europeana, the non-profit organization that centralizes digital access to Europe's cultural funds, and it will allow BSC the exploration of its collections of artistic resources for their analysis.

## Vision

- Embed culture in Artificial Intelligence
- Make culture and history more accessible to people



## Main characteristics



Harnesses Semantic Web, Neuro-linguistic programming (NLP), and Information Retrieval to create relevant contexts for images, that reflect cultural heritage.



Use Neural Networks to generate rich metadata that embeds cultural knowledge.



Use the enriched metadata to provide a search service for cultural objects.



Provide scalable functionality via HPC.